



### High aesthetic quality finishes

- a) Electro-welded wire mesh flush with the glass (no edges)
- b) Electro-welded mesh is continuous between frames (injury prevention)
- c) World Padel Tour type open entrances
- d) Net posts matching the structure
- e) Corners finished off with trims



### Highly sturdy finishes

- a) Complete structure in hot galvanized steel
- b) 156 metallic anchors bolts, certified and homologate by the EU
- c) All screws A4 stainless steel and M10 metric
- d) Wire mesh and glass rest on its entire perimeter on a frame
- e) Once installed, large pillars of 120x80mm reinforced with buttresses
- f) Ventilation holes

## Technical description: VISION METALLIC STRUCTURE (EN 1090)

It is the latest generation padel court, which combines building systems of pillars and frames, to form once installed, large pillars of 120x80mm reinforced with buttresses. Besides being super-resistant, in the VISION model, the electro-welded wire mesh flush with the glass (no edges), the wire mesh is continuous between frames (injury prevention), and both wire mesh and glass rest on its entire perimeter on a frame, guaranteeing finishes of high aesthetic quality with highly robust finishes. It is distributed in:

- 30 metal frames built with 40x40x2mm tube, with 48x48x4mm electro-welded wire mesh, internally reinforced with two extra 40x40x2mm tubes to ensure the long-term stability of the wire mesh. When glass and wire mesh coincide in the same frame, it is reinforced internally with 80x40x2mm tube to support and protect both. The glass rests on its entire perimeter on a base of 40mm, to ensure maximum stability, better bounce of the ball and safety during the game. 4 frames adapted for player access.
- 20 pillars 80x80x2 mm thick of 3 meters high, with anchor plates measuring 26x16x1 cm thick which are reinforced with 10cm tall buttresses. Each pillar is anchored to the ground using 4 homologated metallic anchors. They are positioned every 2 metres to reinforce and brace the structure.
- 4 pillars 80x80x2 mm thick of 6 meters high, designed for lighting to be installed, with special anchor plates measuring 30x25x1 cm which are reinforced with 80 cm tall buttresses. Each pillar is anchored to the ground using 6 homologated anchor bolts and bolted to the structure to prevent shadows. With a crossbrace to support the floodlights.
- The four corners of the structure are lovingly finished off with trims.
- 2 large open entrances in the centre of the court to facilitate players' quick and safe access and exit
- Set of top-quality net posts and competition net comprising:
  - a) Set of net posts, made in square tube with a removable internal tightening mechanism. Reinforced net posts, hot galvanized and painted to match the rest of the structure.
  - b) Competition net made of 5mm knotless polypropylene yarn and 40x40mm mesh. Long-lasting polyester upper strip with a 6 mm plastic-coated galvanized steel cable.
- All screws are A4 stainless steel and M10 metric; additionally, UV-resistant nylon protective washers are used with the glass. The anchors bolts are certified and homologated by the EU
- All the metal used to produce the metallic structure of the padel court is carbon steel S235JRH (EN 10219) hot galvanized; the wire mesh is pre-galvanized, and the anchor plates are hot-dip galvanized. We shape the material in our factory, taking all details into account, in a flow production system featuring specialised storage, cutting, drilling, assembly and rack packaging processes.
- 9 stage painting process: (1) degreasing; (2, 3 y 4) triple wash using osmotic water; (5) nano-ceramic passivation; (6) wash again; (7) drying; (8) application of electrostatic coating (**in the colour of your choice, normally RAL6005 green, RAL5017 blue, RAL7016 dark grey, RAL9004 black**) using thermosetting polyester paint; and (9) polymerisation tunnel at 200-230°C.

## Technical description: TEMPERED GLASS (EN 12150)

According to the standards of the International Padel Federation for tempered glass 10 or 12mm thick, with flat polished edge, with perfect planimetry and fully homologated. Two systems:

- Traditional design: 14 glasses of 2.995x1.995mm + 4 glasses of 1.995x1.995mm, with 6 and 4 countersunk holes respectively, in total 100m<sup>2</sup>
- WPT design: 18 glasses of 2.995x1.995mm, with 6 countersunk holes, in total 108m<sup>2</sup>

EPDM rubber joints of the highest quality, with the same thickness as the metal section and 5mm thick, to absorb shock and vibration of the glass against the metal structure.

Anchoring of tempered glass with countersunk screws A4 stainless steel and M10 metric, protected with UV-resistant nylon covers.

Installation system: the glass is supported on its entire perimeter in the metal structure and, at the same time, rests on the anchoring plates of the structure that are over-raised from the ground 15mm, facilitating the exit of rainwater and the artificial grass finish below the glasses.

## Technical description: FIELDTURF or MONDO ARTIFICIAL TURF (EN 147301)

FIELDTURF PADEL MASTER - high quality monofilament in green, blue or orange colour.

Turf made with polyethylene fibre, straight monofilament, 12 mm height and 200µm thick. 6 monofilament fibres inserted per knot and 54.600 knots per m<sup>2</sup> (total: 655.200 filaments per m<sup>2</sup>). 8.250 Dtex turf with a total fibre weight of 1.525 g/m<sup>2</sup>. Backing made with a dual layer woven polypropylene with fibrelocked fleece and latex, with a total product weight of 2.845g/m<sup>2</sup>.



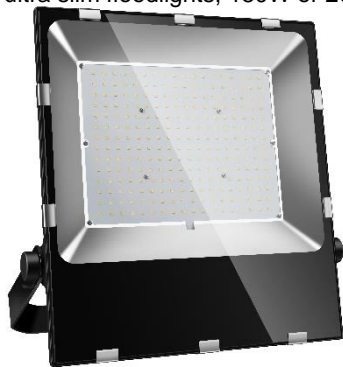
MONDO XN SUPERCOURT (Official Turf of World Padel Tour) - top quality monofilament in green, red or blue colour. Turf made from ST<sup>x</sup> and XNOVA, both polyethylene fibre, texturized (curly) monofilaments, 10 mm height and 250 / 160 µm thick. 6 monofilament fibres inserted per knot and 46.200 knots per m<sup>2</sup> (total: 554.400 filaments per m<sup>2</sup>). 10.000 Dtex turf with a total fibre weight of 1.393 g/m<sup>2</sup>. Support base finished in polyurethane to ensure better long-term finish, with a total product weight of 2.208g/m<sup>2</sup>.

FIELDTURF PADEL PRO - top quality monofilament in green, orange or blue colour. Turf made from polyethylene fibre, texturized (curly) monofilaments, 10 mm height and 160 µm thick. 6 monofilament fibres inserted per knot and 48.294 knots per m<sup>2</sup> (total: 772.703 filaments per m<sup>2</sup>). 8.000 Dtex turf with a total fibre weight of 1.317 g/m<sup>2</sup>. Backing made with a dual layer woven polypropylene with fibrelocked fleece and latex, with a total product weight of 2.557/m<sup>2</sup>.

Game lines in white in the same material, joint tape, special adhesives, as well as supply and extension of silica sand of selected granulometry with rounded edges, in a total of 15 Kg/m<sup>2</sup> (PADEL MASTER) and 10 kg/m<sup>2</sup> (SUPERCOURT and PADEL PRO) respectively.

## Technical description: LED LIGHTING (EN 12193)

LED ultra slim floodlights, 150W or 200W of power with high luminosity, high efficiency heatsink, and high-quality driver:



CLUB	<u>Model</u>	MASTER
150W	<u>Power</u>	200W
22.500 Lm	<u>Luminous flux</u>	30.000 Lm
150 lm/w	<u>Luminous efficiency</u>	150 lm/w
>0,95	<u>Power factor</u>	>0,95
4000K	<u>Color temperature</u>	4000K
120°	<u>Beam angle</u>	120°
50.000 hours	<u>Lifetime</u>	50.000 hours

## CUSTOMISE YOUR PADEL COURT

- Colour of the metallic structure:** choose any colour on the RAL chart, or combine them in the same structure
- Extra application of zinc:** for places with very humid or corrosive atmospheres or climates
- Open entrances without doors (WPT design), with sliding doors, or with hinged doors suitable for access control devise**
- Laser cut in the corners of the metallic structure:** customise the court with the brand or name of your choice
- All large glasses (WPT design):** 18 glasses of 2.995 x 1.995mm
- Grass type and colour:** top quality FIELDTURF or MONDO (WPT official turf); turf brand, model & colour of your choice
- LED lighting:** choose the number and power of the LED floodlights, for personal, commercial or tournament use
- Protection on the access points:** cushioned covers on the net posts and entrances, with space to insert advertising
- Ball-stop nets:** avoid losing balls by installing protective nets on the upper section of the padel court
- Manual scoreboard or digital scoreboard with tactile push button behind the padel' glass and optional live broadcast**